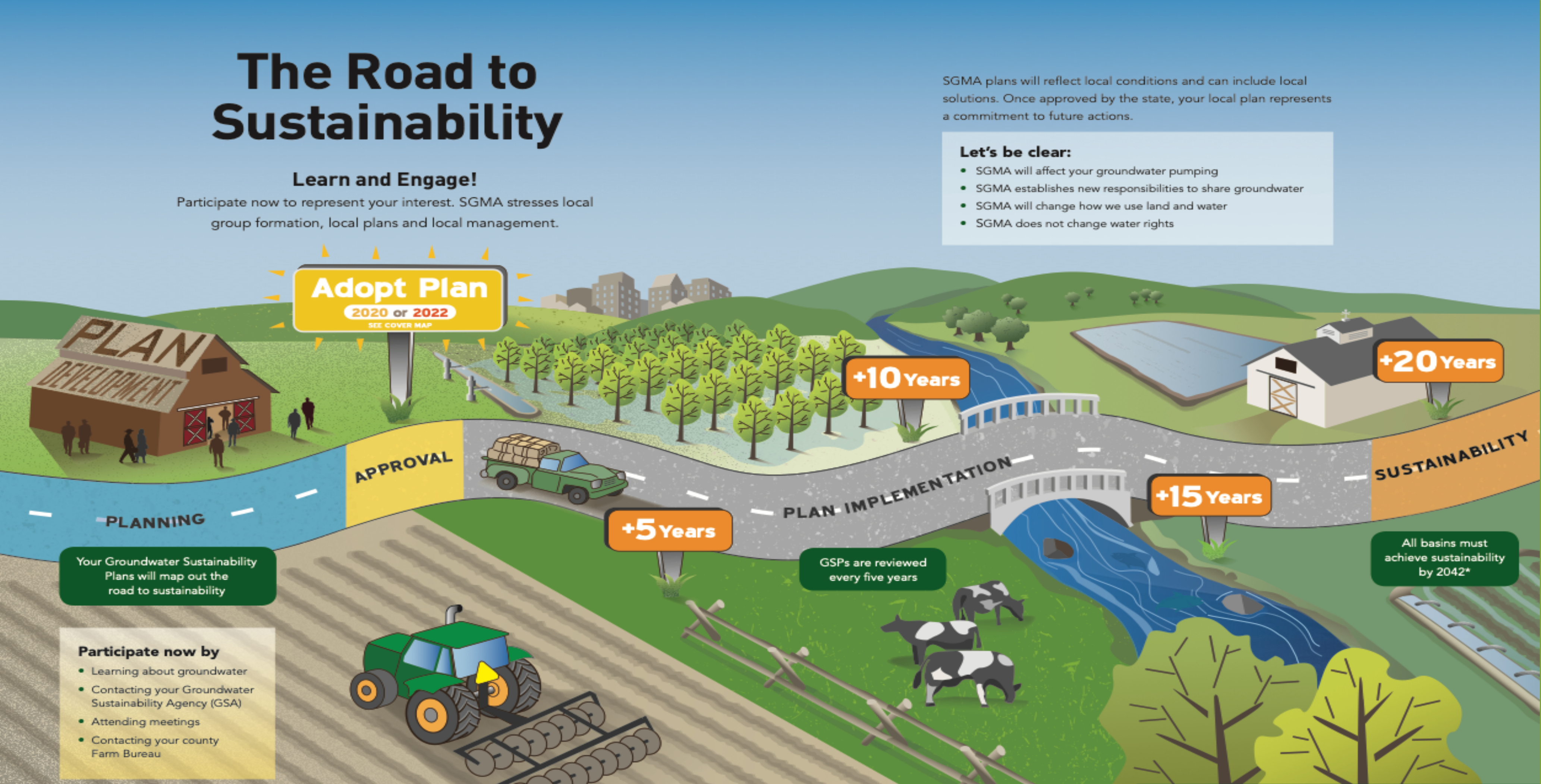


# THE SUSTAINABLE GROUNDWATER MANAGEMENT ACT (SGMA)

## - WHAT IT MEANS FOR SIERRA VALLEY

*How can I get involved? How will it affect me? What is required to comply with SGMA?*

SGMA requires the preparation of Groundwater Sustainability Plans or GSPs, to address and prevent problems in groundwater basins. Signed into law in September 2014, SGMA focuses on protecting California’s groundwater resources for generations to come and SGMA requires medium priority basins like the Sierra Valley Basin to develop a GSP by January 31, 2022. Additionally, SGMA requires demonstrated sustainability within 20 years of that date, and continued sustainability through the 50-year planning and implementation horizon. Sierra Valley has three parts: 1) Sierra Valley Basin, 2) “the sliver” (a small section near Portola) and 3) the Chilcoot Basin. The Chilcoot subbasin is not part of GSP planning process because the Department of Water Resources deemed the groundwater issues there to be less severe.



## IMPORTANT TERMS

**Sustainable Groundwater Management Act (SGMA)**

**Groundwater Sustainability Plan (GSP)**

**Sustainable Management Criteria (SMC)** – Criteria for each indicator to achieve sustainability

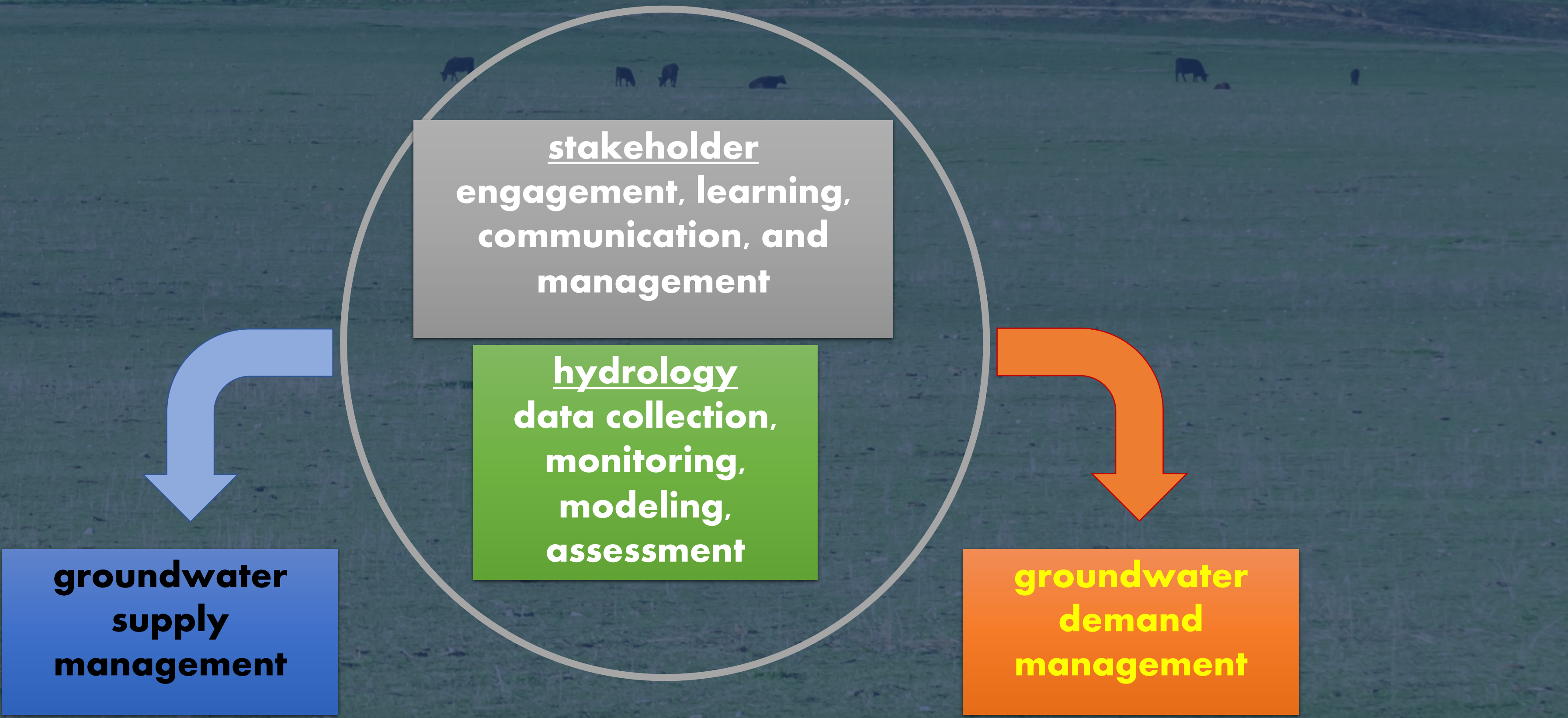
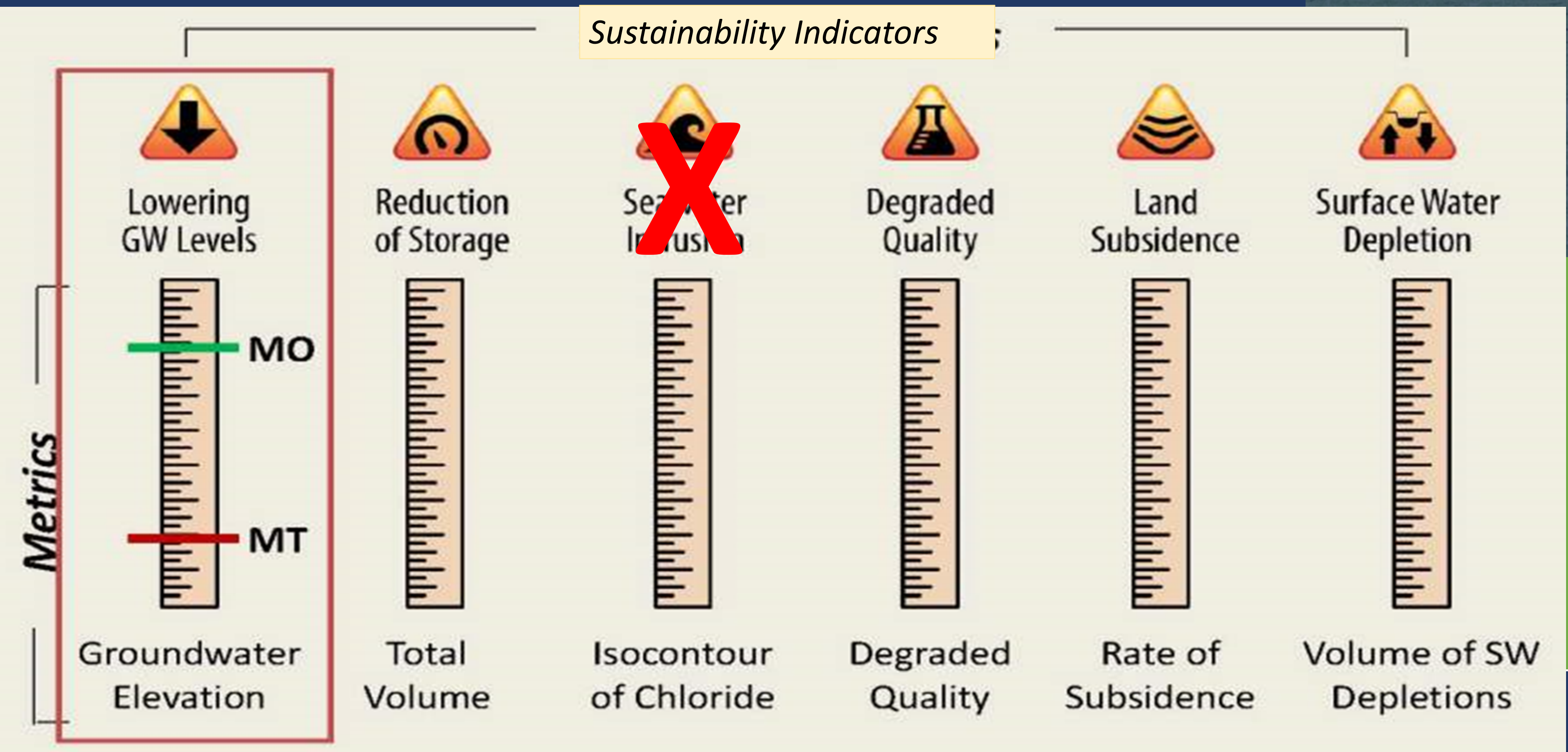
**Undesirable Result** -Significant and unreasonable value for each sustainability Indicator (see below)

**Minimum Threshold (MT)** – Value defines Undesirable Result

**Measurable Objective (MO)** – Value reflects desired groundwater condition

## ACHIEVING SUSTAINABILITY

The Groundwater Sustainability Agencies (GSAs), SVGMD & Plumas County, are working with the community to develop and implement the GSP. SGMA emphasis is on local control with State oversight: The State will intervene if local actions are not taken/ the plan is not implemented or we do not reach sustainability.



## MONITORING

The GSP will establish a monitoring network for each SMC and establish a monitoring program to assess the success of planned actions to address identified concerns and undesirable results in the Basin.

## WHAT DO YOU THINK...

Which undesirable results are you most concerned about?  
What are your ideas for using water sustainably?  
What problems should the GSP address?

## KEY TO SUCCESS

Develop a plan accepted by local stakeholders and approved by the California Department of Water Resources (DWR) that balances groundwater use with supply.

**GSAs:**



**Sierra Valley  
Groundwater  
Management District**