

SVGMD Board Meeting

# Recharge Project Status

---

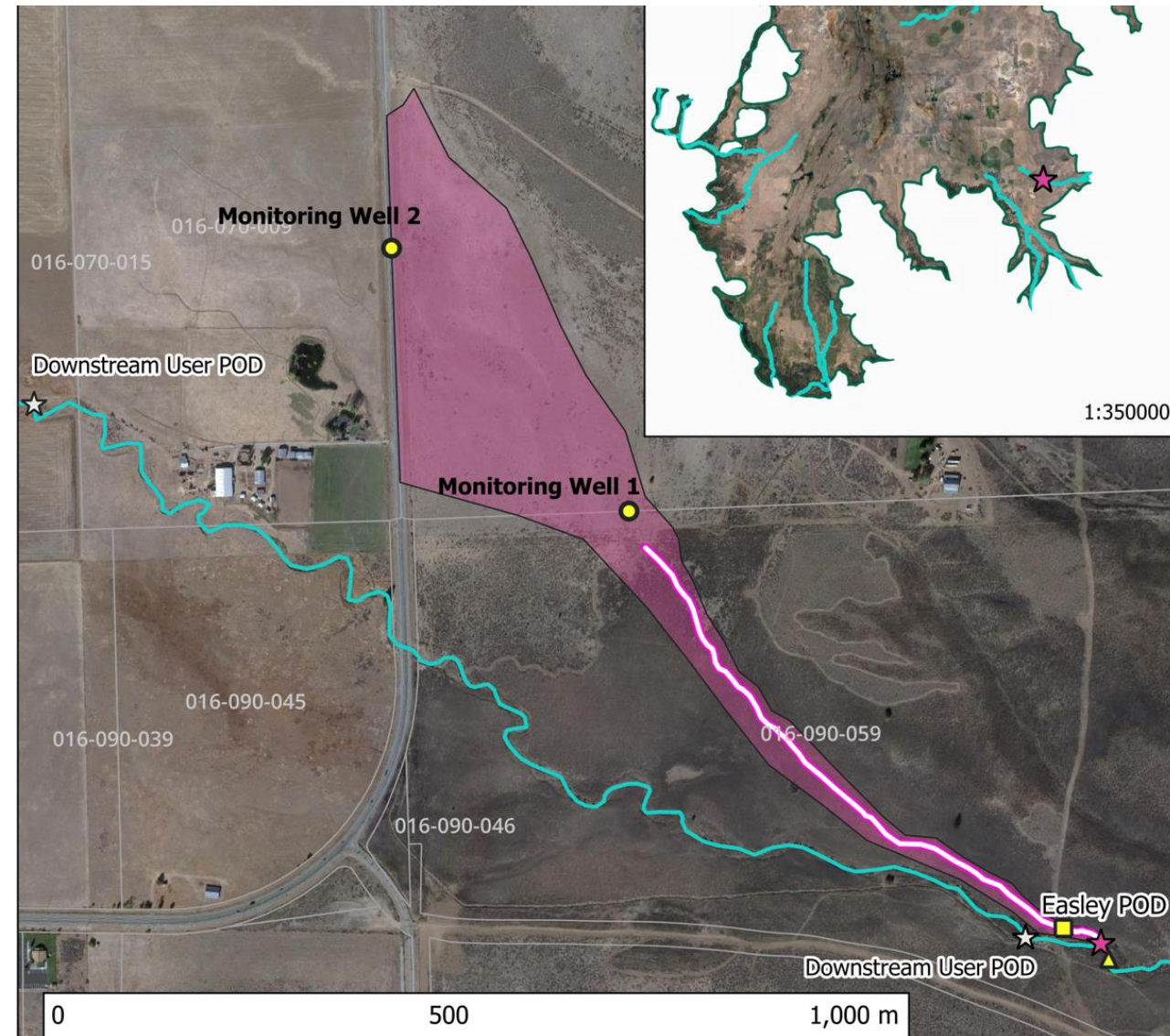


LARRY WALKER  
ASSOCIATES

science | policy | solutions

# Staverville Status

1. We obtained a **temporary recharge permit (1/23/25)– December 1-March 14**
2. Installed monitoring equipment and diversion structure
3. Currently diverting - max diversion of 1 cfs
  - Up to ~0.5 cfs with temporary permit
  - Up to 0.5 cfs through Easley winter water right of 0.5 cfs





# Diversion Structures

---

Check Dam on Staverville Creek with removable checkboards

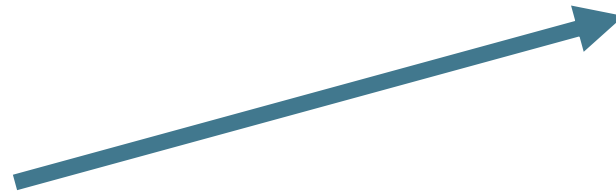


Headgate





# Old headgate to new:





# Out of irrigation pipe into Easley Ditch

---

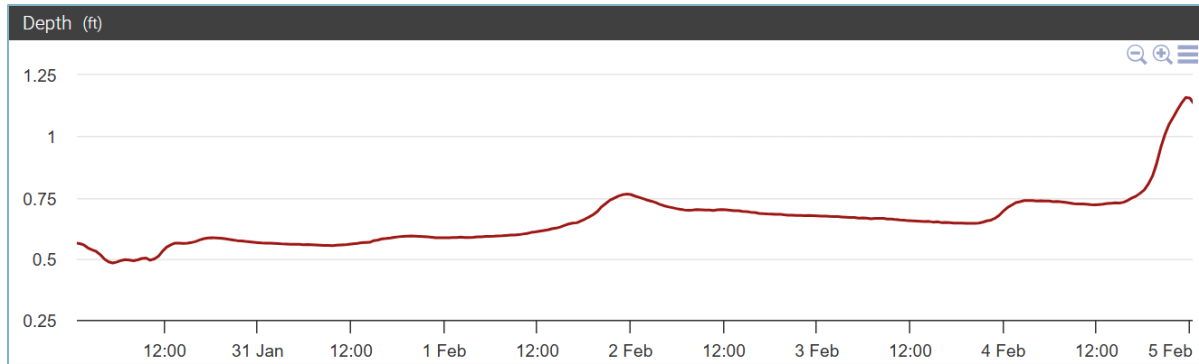


Easley Ditch



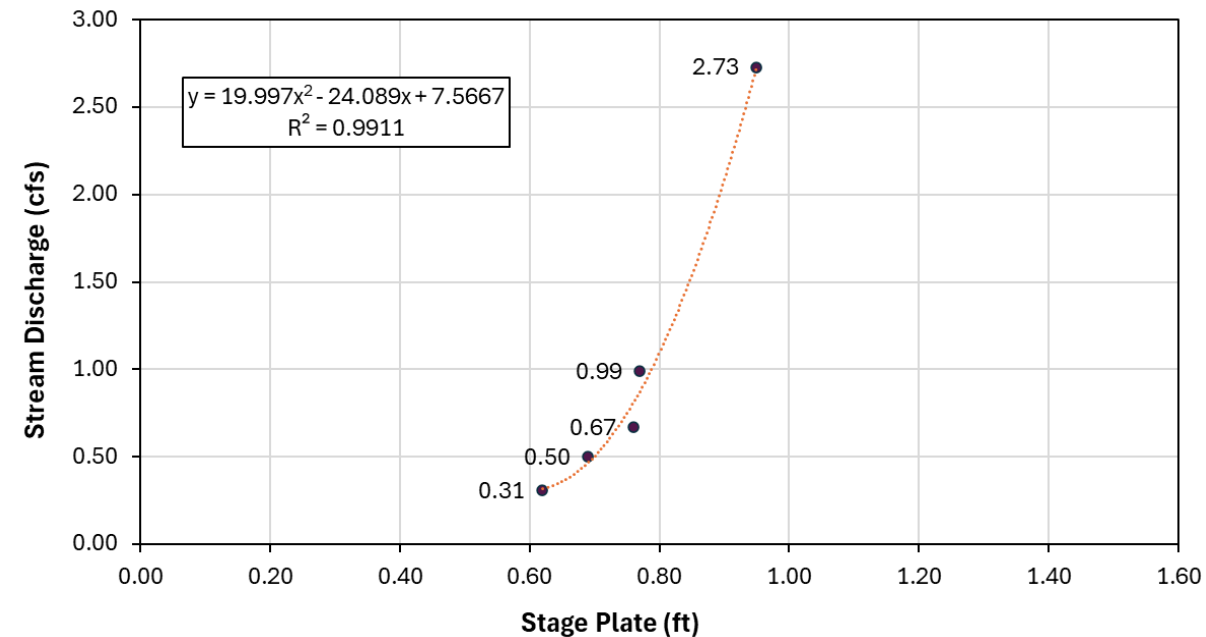


# Flow Monitoring on Staverville



Telemetered stream gage to get daily water depths

Plug depth in to rating curve to determine flow (cfs)



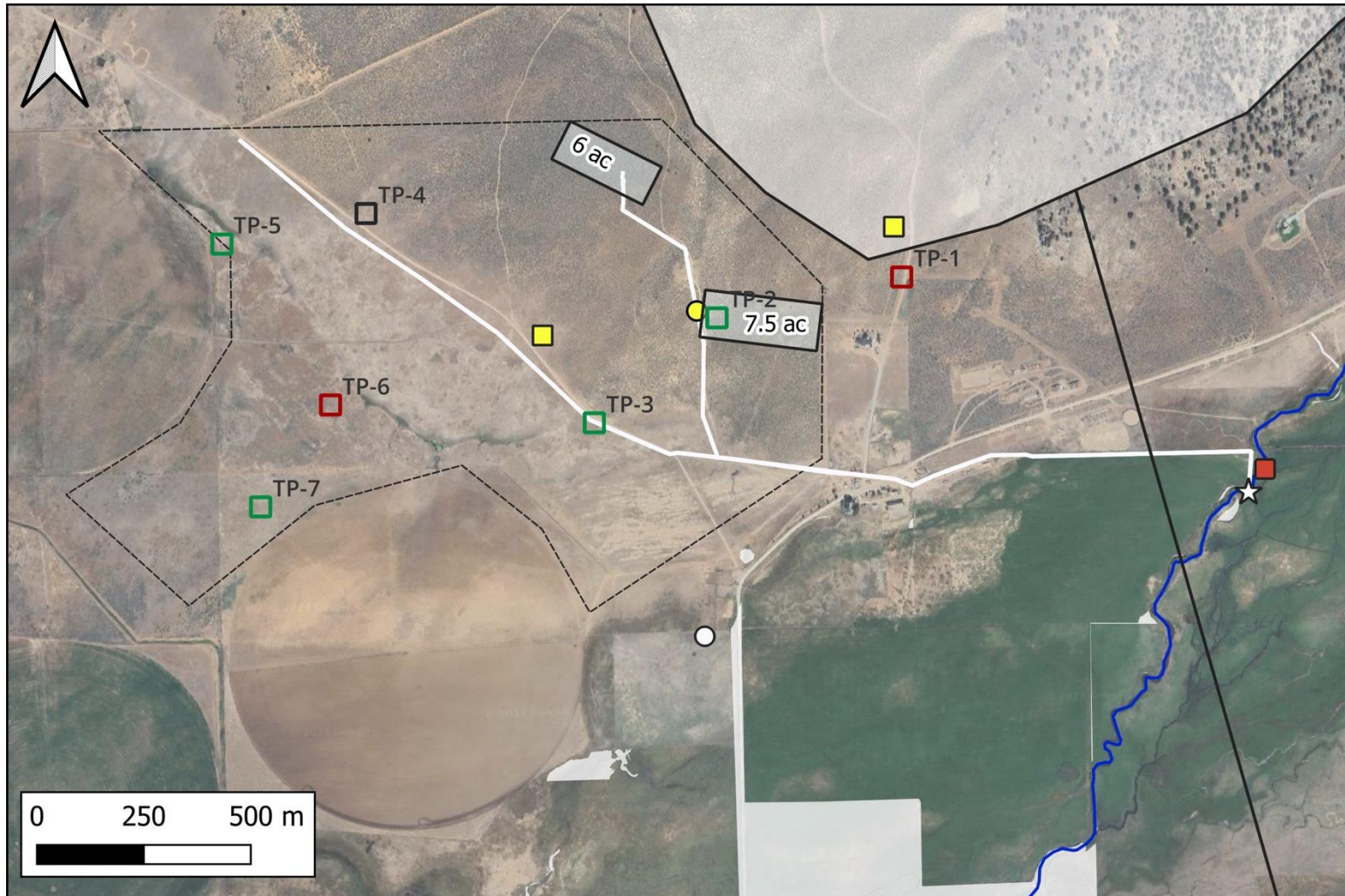
# Summary & Next Steps

---

- Temporary permit conditions reached 3 times week of 2/3-2/8
- Also diverting using the pre-existing 0.5 cfs water right as needed
- Waiting for Flume to monitor outflow more accurately
- Testing flow at outlet of POD to evaluate design efficacy
- Tracking daily conditions and finalizing rating curves



# LLCC Recharge Site (Dotta Ranch)



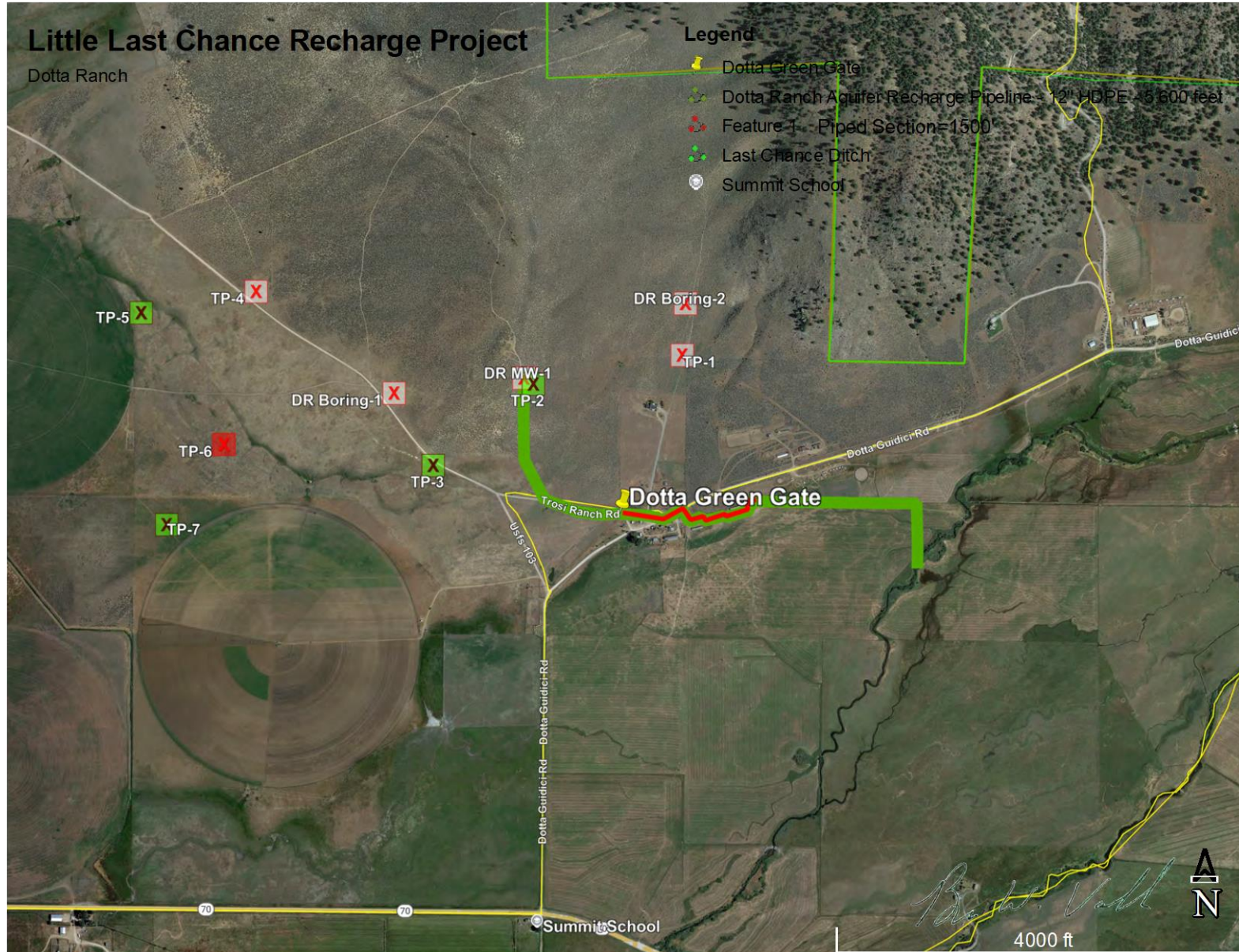
## Little Last Chance Creek North Recharge

- ☆ Little Last Chance Creek POD
  - Planned Test Borings
  - Test Pit Infiltration Rating
    - Good
    - Neutral
    - Poor
  - Telemetry
    - Stream gauge
  - Potential Recharge Zones
  - Planned Monitoring Wells (2025)
  - Water Level Monitoring Wells (after Jan. 1, 2022)
    - DWR
  - Potential Diversion Pipe
  - - - Border Recharge Zone
  - Creeks
  - Likely GDE
- Google Satellite

1:15000  
2025-01-20



# LLCC Recharge Project – Next Steps



- Equipment installation
- Recharge criteria
  - Maintain minimum flow of 2 cfs
  - 90/20 met
  - Last Chance Lake is full