

The background is a light blue gradient with several realistic water droplets of various sizes scattered across it. The droplets have highlights and shadows, giving them a three-dimensional appearance.

2014 SUSTAINABLE GROUNDWATER MANAGEMENT ACT

WHAT IT MEANS FOR SIERRA VALLEY

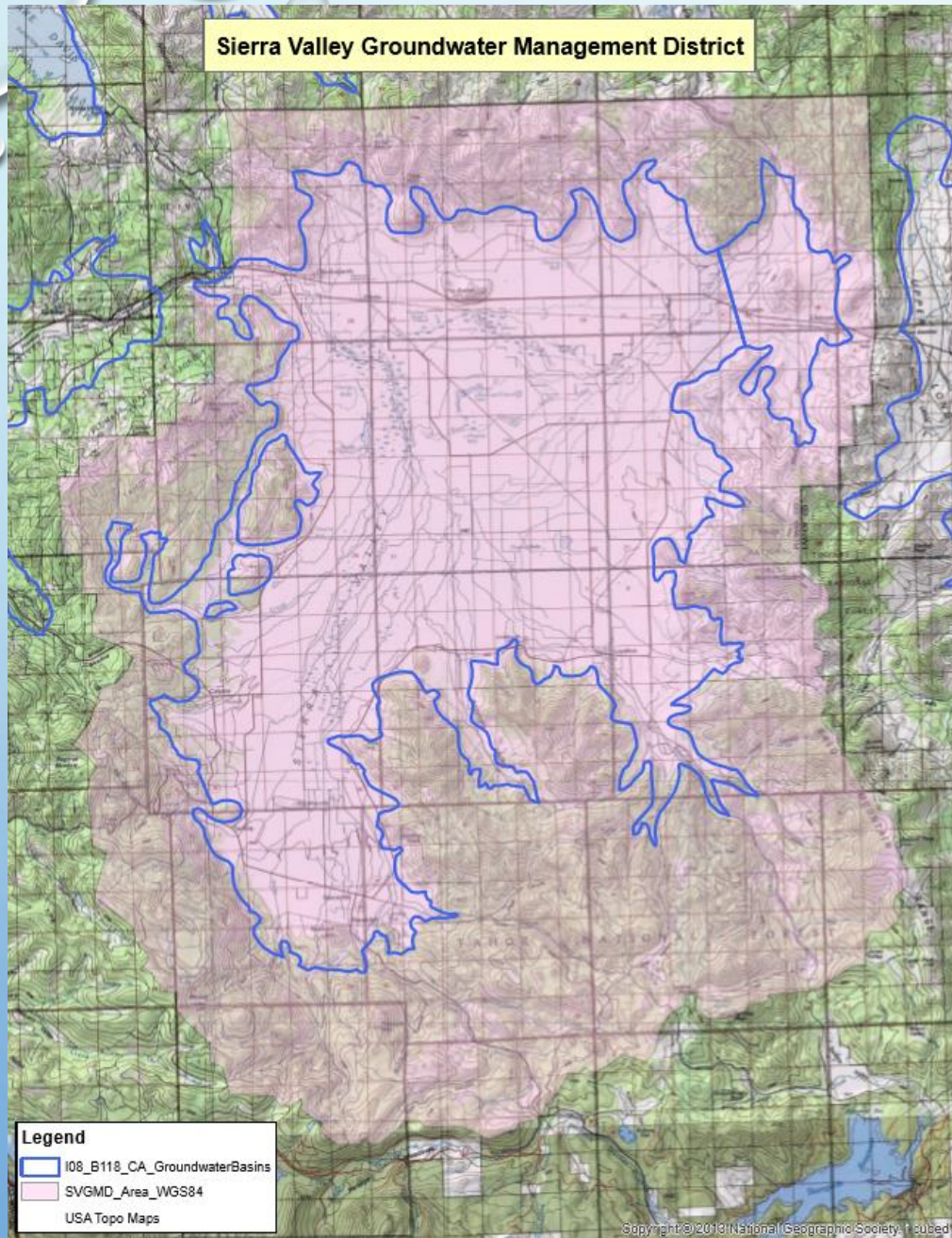
SGMA – THE BASICS

- THERE ARE 517 CALIFORNIA GROUNDWATER BASINS
- BASINS RANKED ON A VARIETY OF CRITERIA – POPULATION, DEPENDENCE ON GW, DECLINING OR DEGRADED GW, ETC.
 - CRITICAL OVERDRAFT BASINS
 - MEDIUM AND HIGH PRIORITY
 - LOW AND VERY LOW PRIORITY
- GROUNDWATER SUSTAINABILITY AGENCY (GSA) FORMATION BY 6/30/17
- GROUNDWATER SUSTAINABILITY PLANS – 2020 OR 2022, DEPENDING ON PRIORITY RANKING

**SVGMD GSA Formation
Public Hearing:
March 13, 2017 5:30 p.m.,
Golden West, Loyalton**

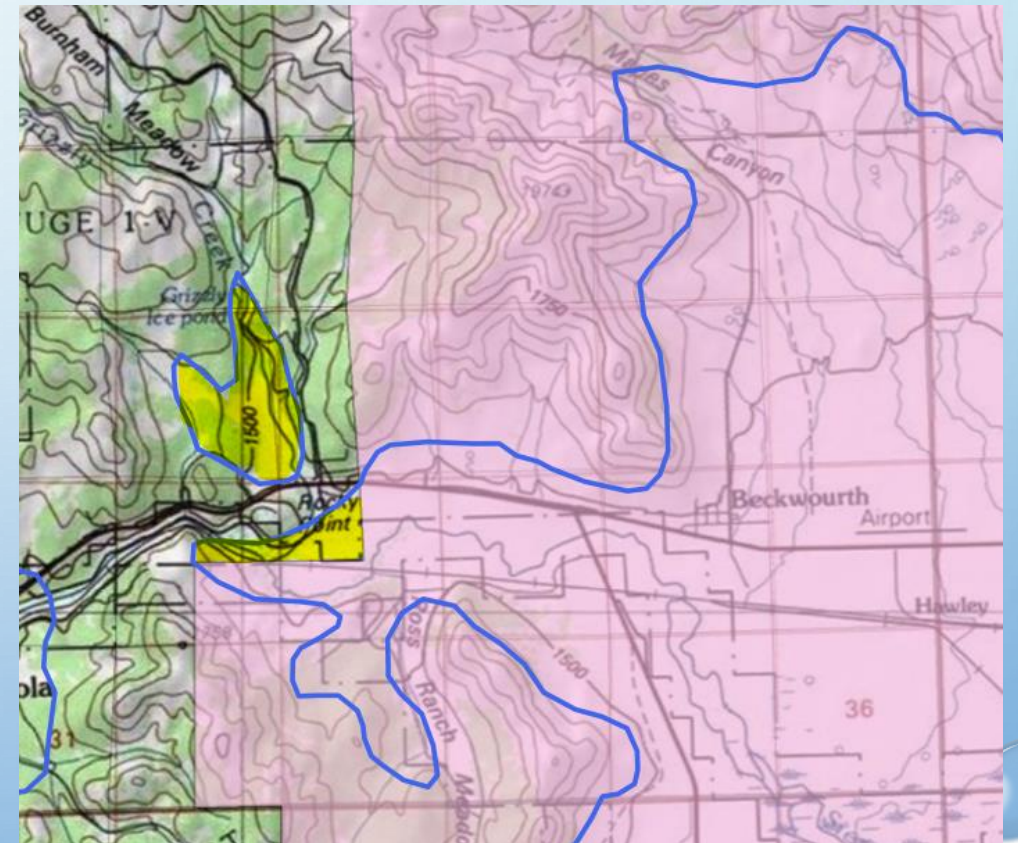
SIERRA VALLEY & SGMA

- SIERRA VALLEY CURRENTLY RANKED MEDIUM-PRIORITY
- HIGHER SIERRA VALLEY RANKING ISSUES INCLUDE:
 - GROUNDWATER RELIANCE
 - IRRIGATED ACREAGE
 - GROUNDWATER IMPACTS:
 - DECLINING GW LEVELS
 - DECLINING/DECLINED ARTESIAN WELLS
 - QUALITY – REPORTS OF BORON, FLUORIDE, ARSENIC AND SODIUM
- NEW CRITERIA AND SCORES COMING THIS SUMMER



MOST OF THE SV BASIN
IS WITHIN SVGMD

Except...



GROUNDWATER SUSTAINABILITY PLANS

- GOAL OF ACT IS TO HAVE NO “UNDESIRABLE RESULTS” WITHIN 20 YEARS
 - CHRONIC LOWERING OF GW LEVELS
 - REDUCTION IN GW STORAGE
 - SEAWATER INTRUSION
 - DEGRADED WATER QUALITY
 - LAND SUBSIDENCE
 - DEPLETIONS OF INTERCONNECTED SURFACE WATERS IMPACTING SURFACE WATER BENEFICIAL USES
- PLAN DUE JANUARY 31, 2022 FOR MEDIUM-PRIORITY BASINS

THERE IS MUCH WORK TO BE DONE

- ENGAGING STAKEHOLDERS
- ANSWERING QUESTIONS:
 - WHAT DOES OUR DATA TELL US?
 - WHAT DO WE STILL NEED TO KNOW?
 - MEASURABLE GOALS?
 - WHAT TOOLS, ACTIONS AND PRACTICES WILL HELP US REACH SUSTAINABILITY / PREVENT UNDESIRABLE CONDITIONS?
- DEVELOPING THE PLAN

TIMELINE

- SVGMD GSA PUBLIC HEARING – MARCH 13, 2017
- GROUNDWATER SUSTAINABILITY AGENCY (GSA) FORMATION – BY JUNE 30, 2017
- NEW SCORES AND RANKING CRITERIA – SUMMER 2017 (ESTIMATED)
- SIERRA VALLEY GROUNDWATER SUSTAINABILITY PLAN ADOPTED – BY JAN. 31, 2022
- DWR AND 60-DAY PUBLIC COMMENT PERIOD ON PLAN AFTER LOCAL ADOPTION
- ANNUAL REPORTING – APRIL 1 EACH YEAR
- PLAN RE-EVALUATION/UPDATES EVERY FIVE YEARS
- OPERATING SUSTAINABLY – 2042

More info → <http://www.water.ca.gov/groundwater/>

The screenshot shows the California Department of Water Resources website. The header includes the CA.GOV logo, the text 'CALIFORNIA DEPARTMENT OF WATER RESOURCES', and navigation links for HOME, NEWSROOM & EVENTS, ISSUES, and ABOUT US. A search bar and location selector (DWR, California) are also present. The main content area features a large blue banner with the word 'Groundwater' and a background image of a water tap. Below the banner is an 'Introduction' section with two paragraphs of text. To the right is a sidebar with a 'GROUNDWATER HOME' section containing links to 'SUSTAINABLE GROUNDWATER MANAGEMENT', 'GROUNDWATER INFORMATION CENTER', 'CASGEM', and 'BULLETIN 118'. At the bottom of the sidebar are social media icons for Facebook, Twitter, and YouTube.

CA.gov | Help | Accessibility

CA.GOV CALIFORNIA DEPARTMENT OF WATER RESOURCES

Search

○ DWR ● California

HOME NEWSROOM & EVENTS ISSUES ABOUT US

Groundwater

Introduction

Groundwater resources play a vital role in maintaining California's economic and environmental sustainability. During an average year, California's 515 alluvial groundwater basins and subbasins contribute approximately 38 percent toward the State's total water supply. During dry years, groundwater contributes up to 46 percent (or more) of the statewide annual supply, and serves as a critical buffer against the impacts of drought and climate change. Many municipal, agricultural, and disadvantaged communities rely on groundwater for up to 100 percent of their water supply needs. Groundwater extraction in excess of natural and managed recharge has caused historically-low groundwater elevations in many regions of California.

DWR has a long-standing history of collecting and analyzing groundwater data, investigating and reporting groundwater conditions, implementing local groundwater assistance grants, encouraging integrated water management, and providing the technical expertise needed to improve statewide groundwater management practices. In addition, DWR is responsible for implementing the Sustainable Groundwater Management Act (SGMA), the California Statewide Groundwater Elevation Monitoring (CASGEM) Program, and characterizing California's groundwater basins through updates to Bulletin 118.

The Sustainable Groundwater Management (SGM) Program

To implement the increased responsibilities given to DWR by the 2014 Sustainable Groundwater Management Act (SGMA), DWR has expanded its existing local assistance programs in the Division of Integrated Regional Water Management (DIRWM) and has developed a Strategic Plan for the Sustainable Groundwater Management (SGM) Program. [More info...](#)

GROUNDWATER HOME

- » SUSTAINABLE GROUNDWATER MANAGEMENT
- » GROUNDWATER INFORMATION CENTER
- » CASGEM
- » BULLETIN 118

f t y

SIGN UP TO RECEIVE STAKEHOLDER UPDATES

- JENNY GANT HAS A SIGN-UP SHEET TODAY
- CONTACT THE DISTRICT ANY TIME:
 - EMAIL: SIERRAVALLEYGMD@SBCGLOBAL.NET
 - PHONE: 530-428-5002

**We need your
participation**